

Tracks of heritage

Reimagining Forgotten Industrial Heritage in Hanoi | A Case of Gia Lam Train Factory

After the late 19th-century industrial revolution, cities were designed to have separate residential and industrial zones. However, during this period of time, Hanoi (Vietnam) evolved on a different path. Industrial sites were established first in Hanoi, and from those sites, residential neighborhoods grew around and were deeply ingrained in the manufacturing landscape and the city.

Hanoi, like many cities around the world, has experienced significant industrialization in the past and is currently facing deindustrialization, leading to the presence of numerous abandoned factory plants that now serve as relics of a bygone era. As the country strives to transition toward a greener industry, these deserted factories continue to pose a persistent challenge for both the community and the city. The existence of these neglected industrial lands represents a squandered opportunity in terms of space, resources, and potential.

Are these neglected structures of steel and concrete suitable for repurposing to address current urban needs?

While Vietnam grows, the issue of reviving the relics of once-thriving industrial hubs to meet the expectations of citizens and community needs in this new period has become an ongoing topic of discussion in the country. This thesis will present an in-depth examination of the overall situation, conduct an analysis, and propose a solution for the Gia Lam Train Factory, one of Hanoi's most significant industrial heritage sites. Which has been abandoned for more than a decade, and a revival project may hold a huge impact on the site itself and the urban regeneration of the surrounding neighborhood or a bigger picture of Hanoi's future.

private residential area

built area 4500 m2
gross floor area 70 200 m2
apartments ~ 702 units
Residents ~ 1650 people



student housing building B
Gross floor 21 912 m2
~ 701 rooms

parking
student housing

student housing building A
Gross floor 19 764 m2
~ 592 rooms

Gia Lam Train Station
national rail
metro line

outdoor locomotives exhibition

pedestrian road
1km length in total
10min walk through the park

museum building
built area 7923 m2

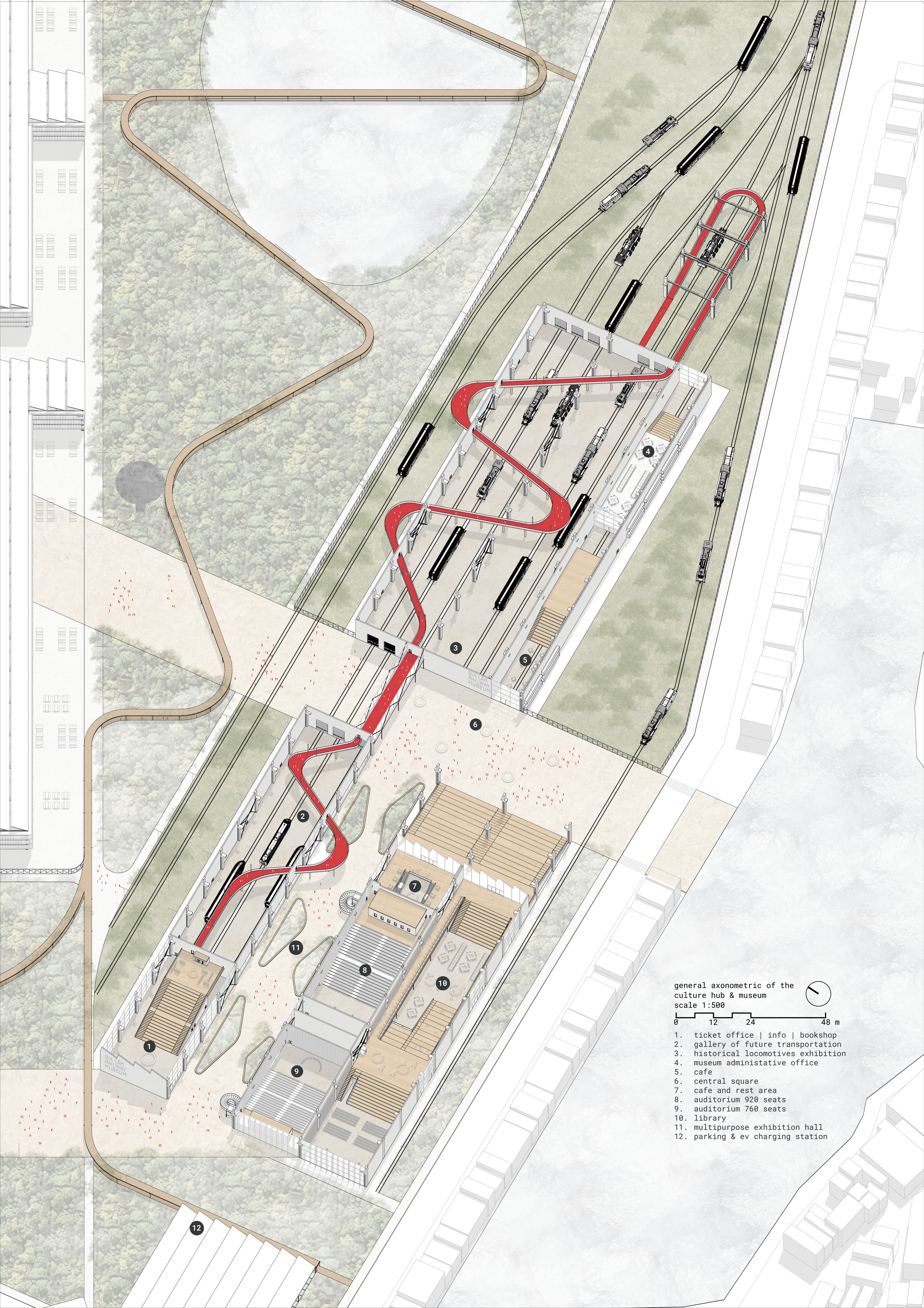
culture hub building
built area 13 824 m2

parking
culture hub & museum

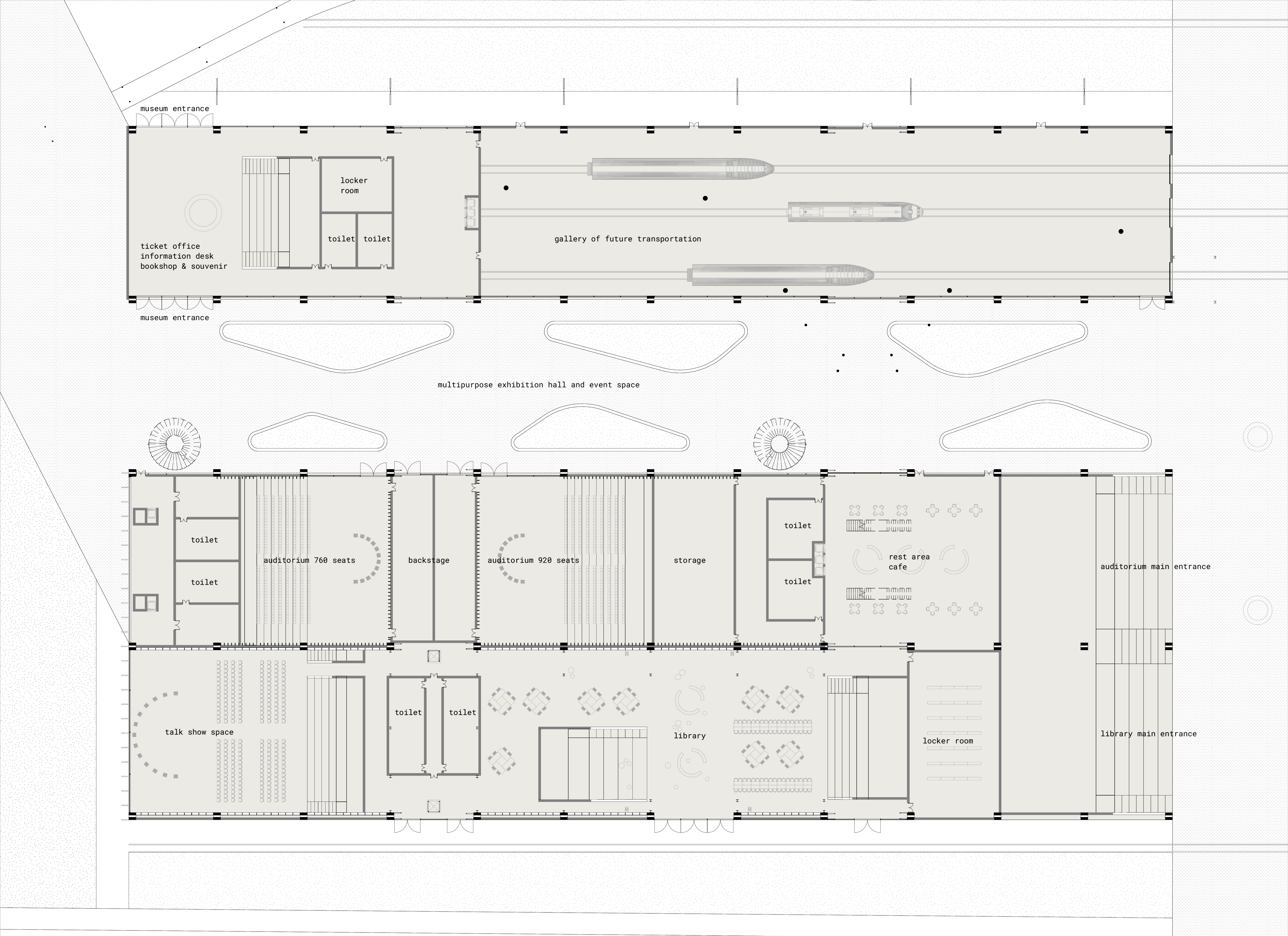
office landmark tower
gross floor 87480m2

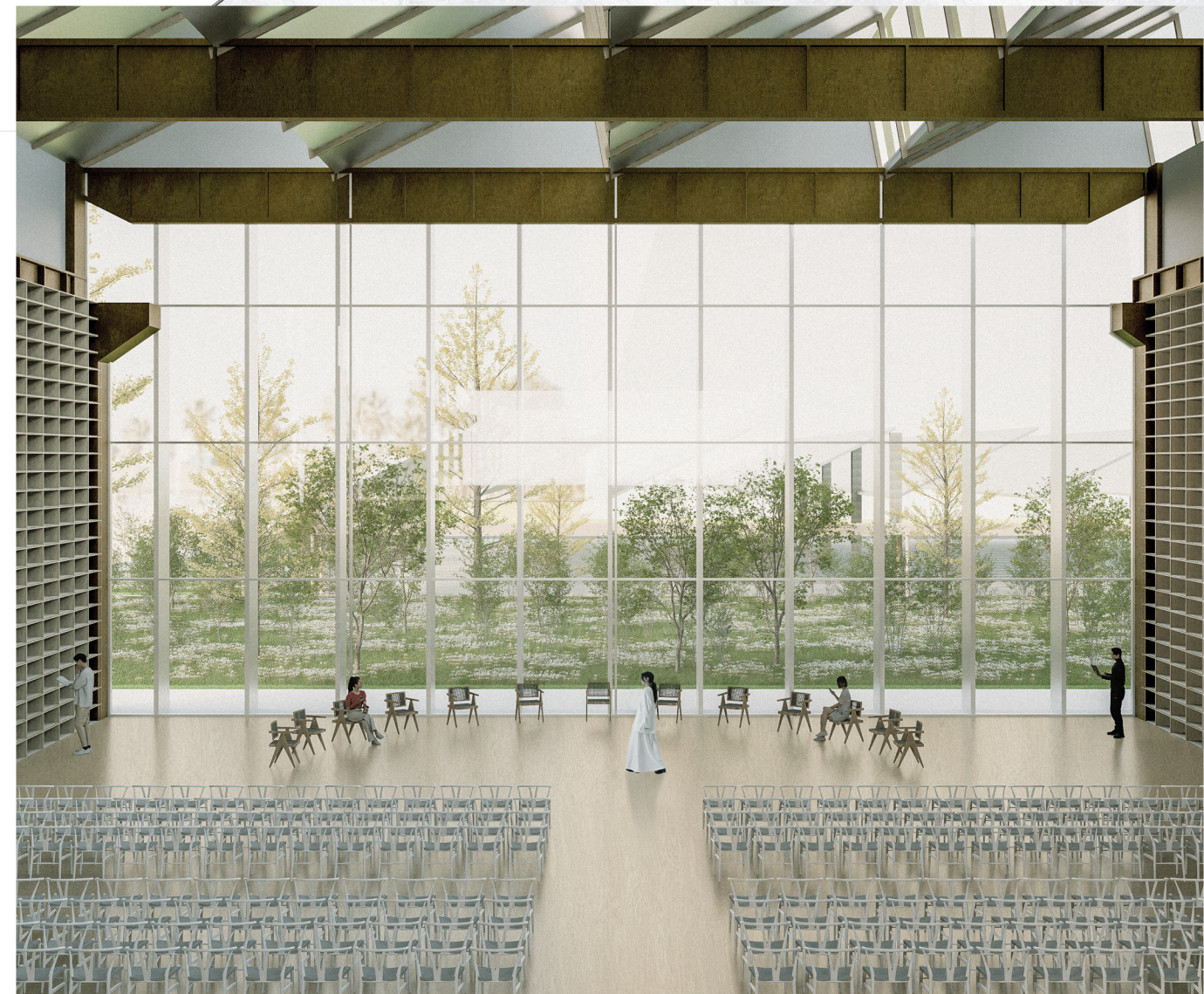
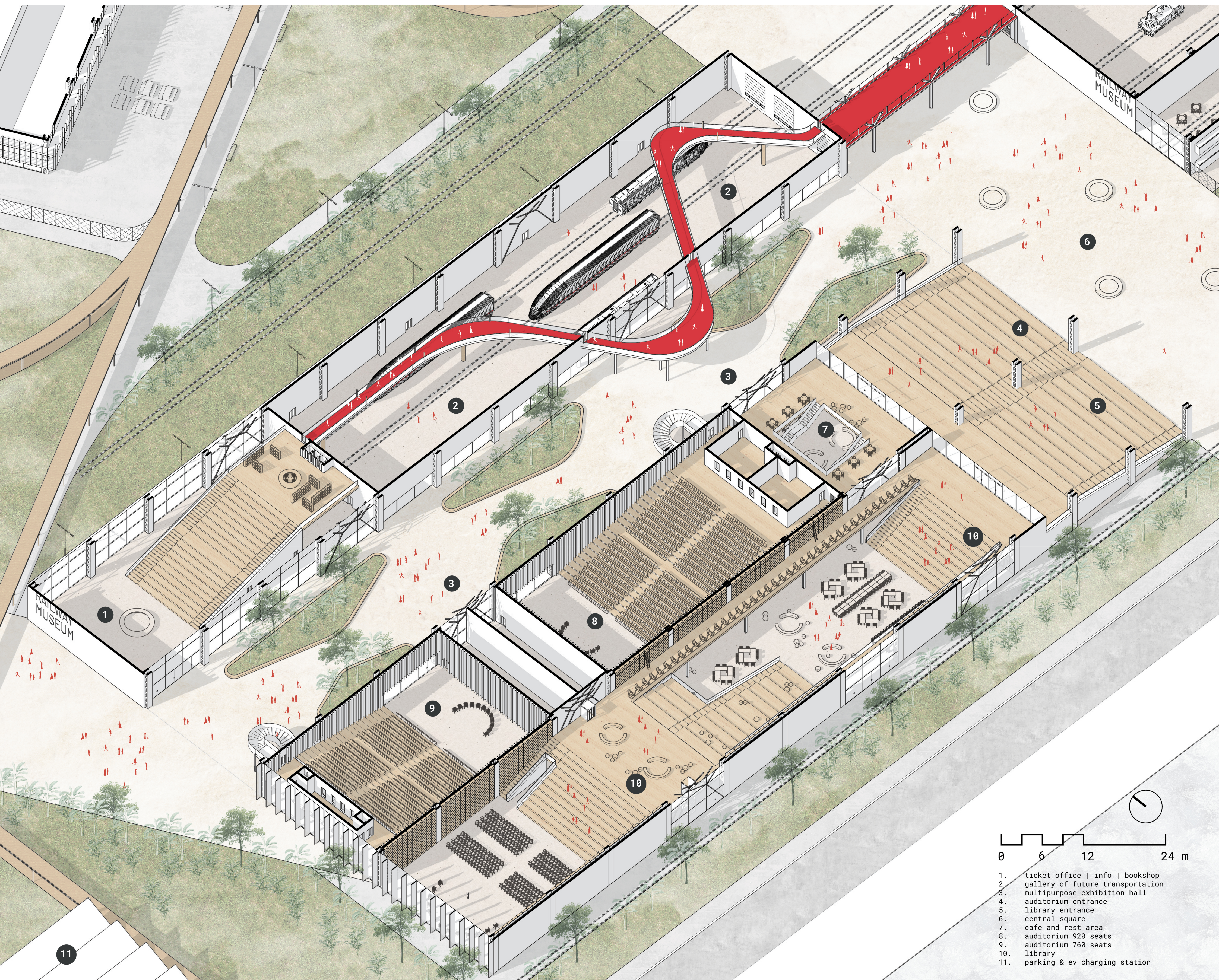
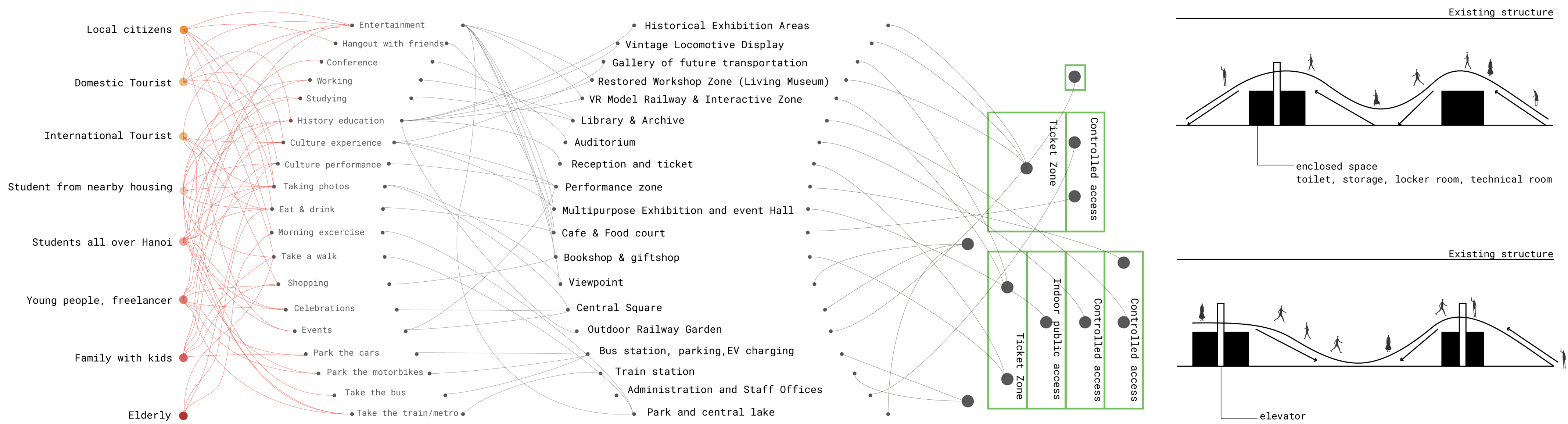
general axonometric of the
master plan
scale 1:1000
0 24 48 96 m

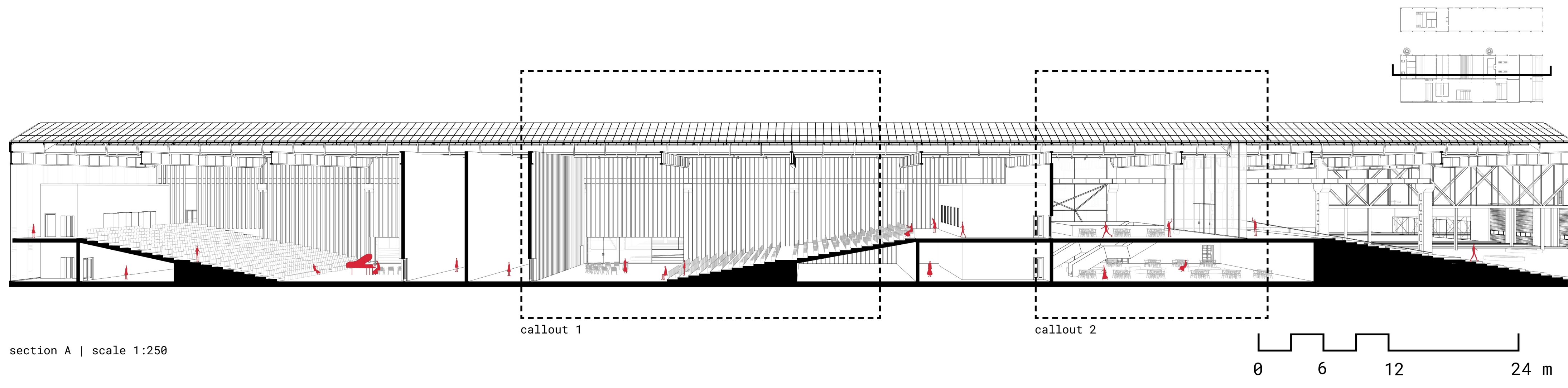




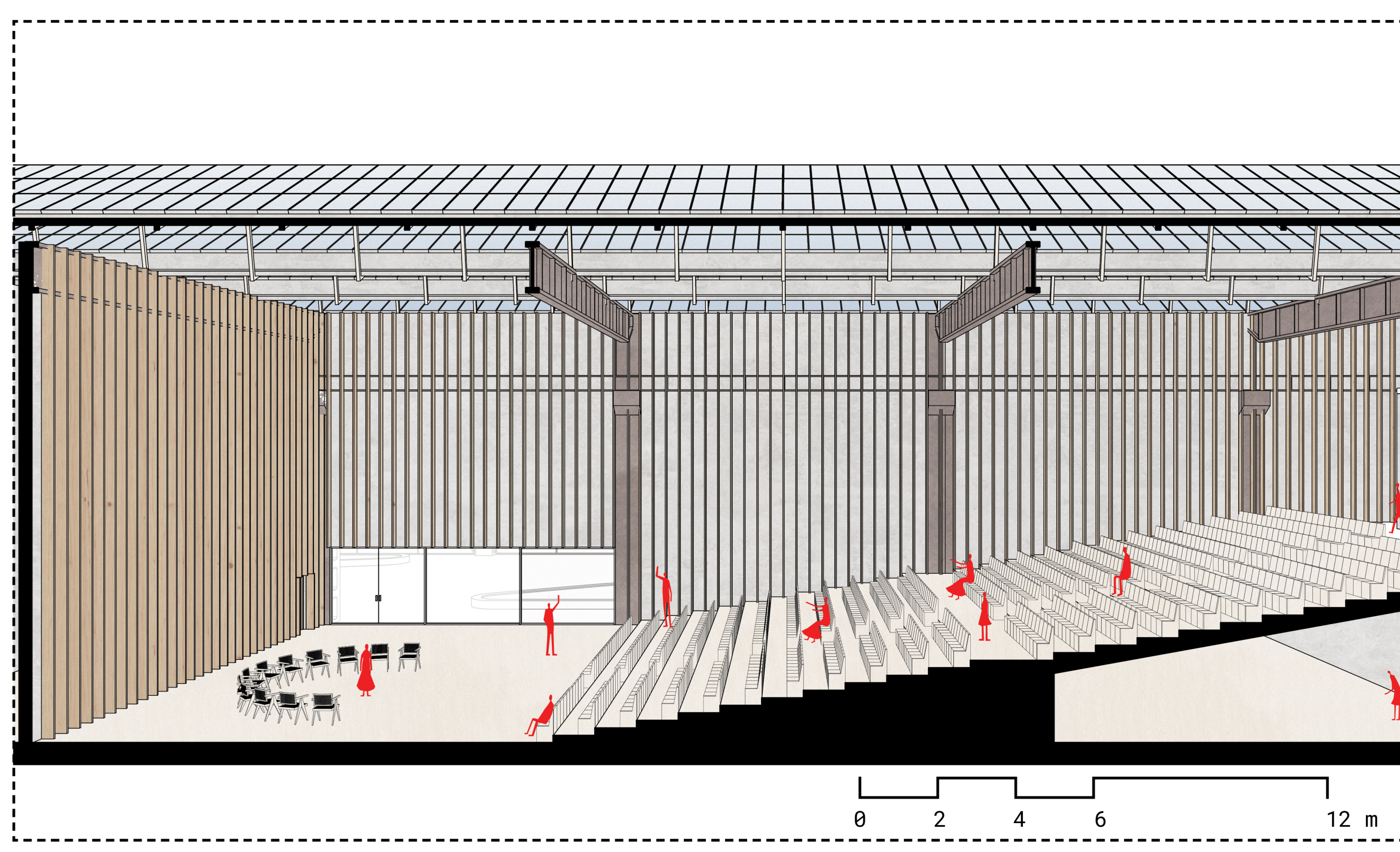
- general axonometric of the
culture hub & museum
scale 1:500
- 0 12 24 48 m
- 1. ticket office | info | bookshop
 - 2. gallery of future transportation
 - 3. historical locomotives exhibition
 - 4. museum administrative office
 - 5. cafe
 - 6. central square
 - 7. cafe and rest area
 - 8. auditorium 920 seats
 - 9. auditorium 760 seats
 - 10. library
 - 11. multipurpose exhibition hall
 - 12. parking & ev charging station



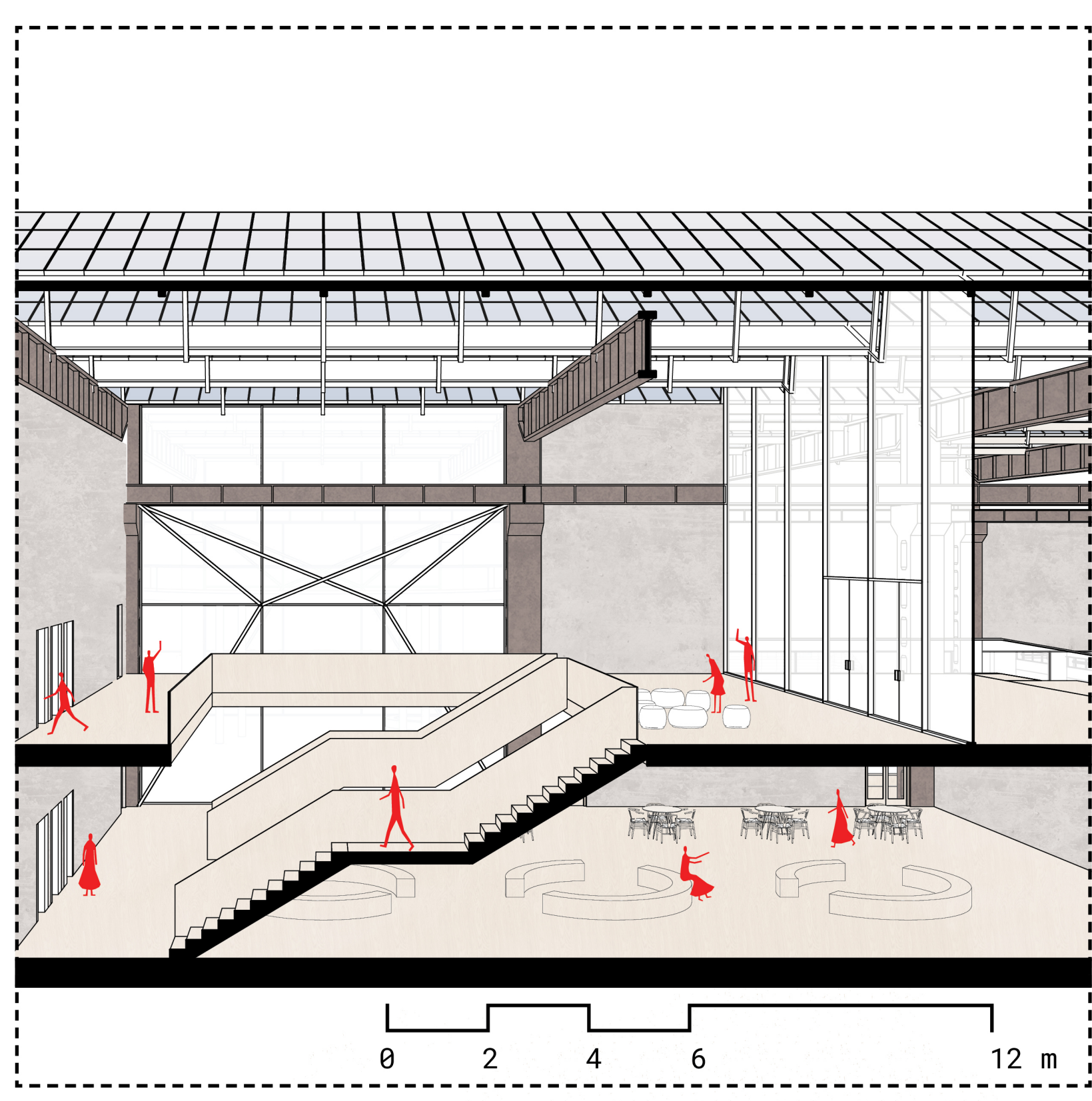




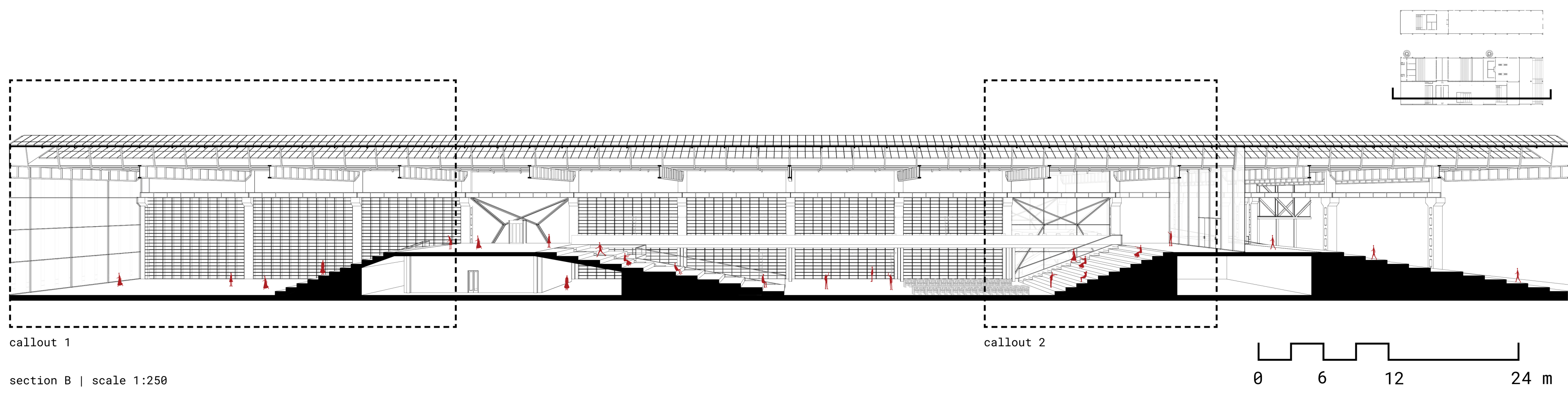
section A | scale 1:250



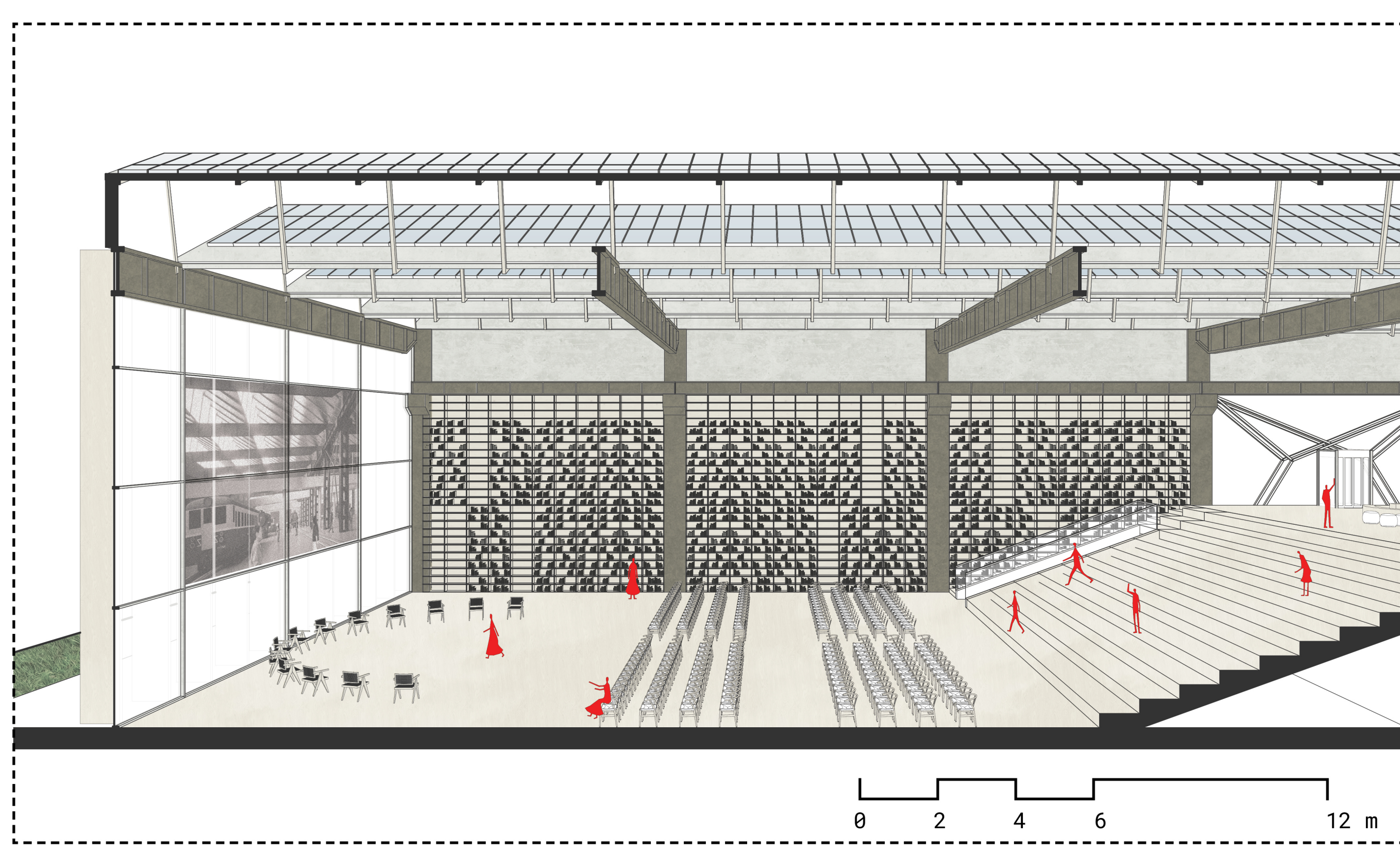
section A | callout 1 | scale 1:100



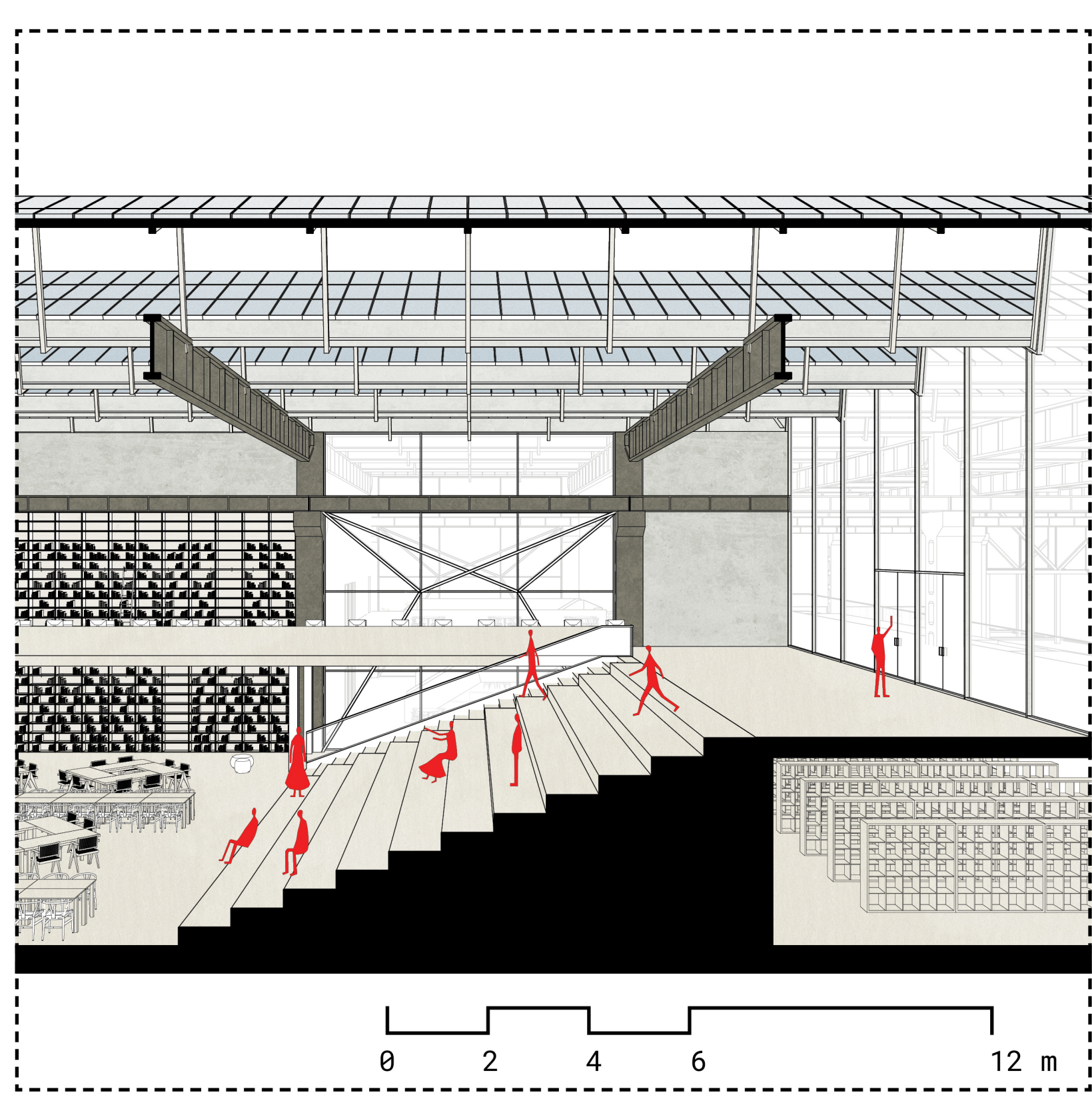
section A | callout 2 | scale 1:100



section B | scale 1:250



section B | callout 1 | scale 1:100



section B | callout 2 | scale 1:100